

**Better gradeability: better gradeability  
than competitors to get more jobs**

Optimized front and rear drive capacity and mass distribution, achieving the maximum gradeability of 65% in the industry and better adaptability to working.

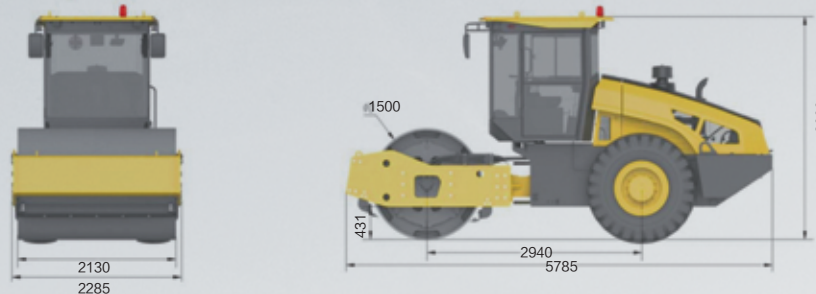
**More comfortable and safer driving:  
no fatigue during long-term driving**

New generation of cambered noise reduction and vibration reduction cab (the best noise and vibration reduction performance in the industry), optimized air conditioning outlet (from up to straight), ergonomic manipulation space, making driving a pleasant experience.

### Product parameters

#### Overall dimensions

All dimensions are approximate and overall dimensions vary depending on the service condition of the device.



Unit: mm

Item		Performance parameters	Item		Performance parameters		
Mass load parameters	Working mass (kg)		12400	Maneuvering performance parameters	Minimum ground clearance (mm)	431	
	Mass allocated to vibrating drum (kg)		6950		Wheelbase (mm)	2940	
	Mass allocated to driving axle (kg)		5450		Steering angle (° )	±35	
	Static linear load of vibrating drum (N/cm)		326		Swing angle (° )	±12	
Parameters of compaction mechanism	Vibration frequency (Hz)		32/36	Engine	Minimum turning outer diameter (mm)		11700
	Nominal amplitude (mm)		1.8/0.9		Tire specification	23.1-24	
	Excitation force (kN)		280/178		Supplier	Cummins	
	Diameter of vibrating drum (mm)		1500		Model	QSB3.9-C150	
	Width of vibrating drum (mm)		2130		Discharge	Euro III	
Maneuvering performance parameters	Vibrating drum rim thickness (mm)		25	Capacity parameters	Rated power (kW)		110
	Travel speed (km/h)		0-5		Battery, V × Ah		24×120
			0-6		Fuel tank (L)		200
			0-9		Hydraulic oil tank (L)		80
			0-12				
Theoretical gradeability		65%					

**SANY**  
三一重工股份有限公司  
SANY HEAVY INDUSTRY CO., LTD.

中国湖南长沙经济技术开发区三一工业城  
Address: SANY Industry Town, Changsha National Economic & Technical Development Zone, Hunan, China  
邮编 Zip 410100  
电话 Tel 0731-84031888  
传真 Fax 0731-84031999 咨询投诉电话 Consulting 4008 879318

由于技术不断更新,技术参数如有更改,恕不另行通知。图片上的机器可能包括附加设备。  
Materials and specifications are subject to change without notice in accordance with our continuous technical innovations.  
Featured machines in photos may include additional equipment.

版权为三一重工所有,未经三一重工书面许可,本目录任何部分的内容不得被复制或抄袭用于任何目的。  
SANY Heavy Industry. No part of the content in this document may be copied or plagiarized for any purpose without permission in writing from SANY Heavy Industry.

本画册解释权归三一重工所有



Euro III

# SSR120C-10S

**Efficient compaction**

### Product Highlights

**More earnings: 10% more efficient  
in road-rolling than competitors**

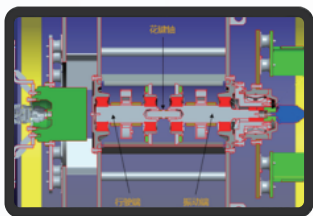
High-frequency vibration and even compaction (the industry's maximum exciting force is 280kN, and amplitude uniformity <7%), achieving a compaction efficiency and quality 10% better than those of competitors.

# SSR120C-10S

Euro III C10S series

## 1 More efficient compaction

- ◆ The exciting force is **280kN** (competitor: 255kN), and the compaction capacity is stronger;
- ◆ The amplitude uniformity is **<7%** (competitor: >8%), and the compaction quality is higher.



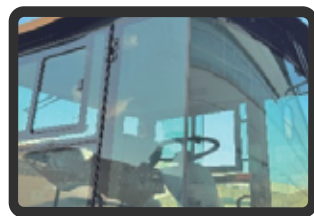
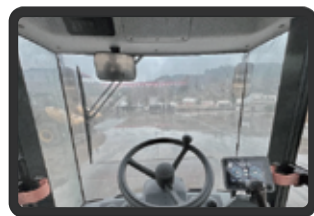
## 2 Stronger gradeability

- ◆ Reinforced mine rear axle (speed ratio increased to 64), with the theoretical gradeability improved from 53% to **65%** (competitor: 53%);
- ◆ The front and rear mass distribution and the front and rear driving forces of the complete machine are optimally matched to improve the adaptability to working conditions;
- ◆ The driving force of front drums and rear tires can be adjusted separately to effectively prevent slipping of drums or tires;



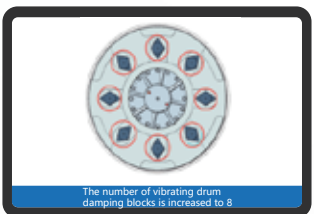
## 3 More comfortable driving experience

- ◆ The cab is certified by FOPS&ROPS, which makes it safer and more reliable;
- ◆ The new generation of noise and vibration reduction cab has a good vibration reduction effect with only 78 dB (competitor: 88.3) inside the cab, which is the best in the industry;
- ◆ Ergonomic control space, curved panoramic front windshield, unobstructed view (no A-pillar), making driving more comfortable and safer;
- ◆ High-power air conditioning system, four-wraparound air outlet in the cab (from up to straight); better air tightness. The indoor temperature can be cooled to 19.4° C (competitor: 25.1° C) within 15 minutes in summer.



## 4 More reliable quality

- ◆ Reinforced four-point support + vibration bearing waterwheel lubrication technology (patent) is adopted for the vibrating drum, with a service life of more than **10000** hours, and the number of damping blocks at the traveling end is increased to 8;
- ◆ Hydraulic system self-cleaning system is equipped to ensure the durability of the hydraulic system;
- ◆ Reinforced mine rear axle is adopted (the planetary reducer has independent lubrication, with larger modulus of main reducer, and the number of wheel-hub planet gears is increased from 3 to 4) to ensure durability for more than **5000** hours.



## 5 More convenient maintenance

- ◆ All filters are facing outward, which is convenient for maintenance personnel to replace them directly outside the frame;
  - ◆ Integrated cover (integrated side plate), opening range up to 61° , easy and convenient maintenance;
  - ◆ The frame is only 1.1m above the ground, realizing one-stop maintenance;
- Predictive maintenance technology V2.0 and the third generation of intelligent display system realize intelligent prediction of problems.



## Economic value analysis

### Efficient compaction, earning an additional RMB 12,000 per year:

- ◆ Efficient compaction, earning an additional RMB 12,000 per year;  
Large exciting force, good uniformity, with efficiency and quality more than 10% higher, making an additional profit of RMB 12,000/year;
- ◆ Scenario 1: Calculated according to the variable quantities and more pay for more work, SANY is 10% more efficient in road-rolling than competitors every year. According to the industry average annual income of RMB 120,000, SANY earns an additional RMB 12,000 (RMB 120,000 × 10%=RMB 12000) every year;
- ◆ Scenario 2: Calculated according to the fixed quantities, SANY has high efficiency and saves 10% of time for the same project. According to the average annual construction hours of 1500 hours, SANY saves about RMB 12000 (oil price RMB 8/L, oil consumption 10 L/h, 150 h × RMB 8/L × 10 L/h =RMB 12,000) every year. In addition, the driver's salary can be saved for 1 month;
- ◆ Compaction amplitude uniformity < 7%, with less roughness of pavement.

### Low O&M cost, saving RMB 14,000/year:

- ◆ The fuel consumption is lower, the engine features customized curve, intelligent load matching, and the fuel consumption of high frequency and high speed compaction is as low as 9–11L/h (fuel price: RMB 8/L; annual working time: 1500h; fuel consumption reduction: 1L/h), saving RMB 12,000/year;
- ◆ The maintenance takes the least time, saving 50% of time and RMB 2,000/year in labor cost;
- ◆ Solid and durable with better value preservation;
- ◆ Mining standards and reinforced design of core components;
- ◆ Predictive maintenance technology escorts the healthy operation of equipment.

## Product options and smart kit

Optional configuration	Application Scenarios and Descriptions	SSR120C-10S (Euro III)
Smooth wheel	Compaction of earthwork, cement stabilized macadam and other subgrade	●
Combined bump	Commonly used for clay compaction; bumps removable	○
Welded bump	Bump cannot be removed	○
Cab	Enclosed manoeuvring space with air conditioning	●
Driving shed	Open manoeuvring space without air conditioning	○
Rear axle without differential lock	Applicable to conventional subgrade compaction	●
Rear axle with differential lock	Used for compaction of sandy and soft subgrades Force the left and right tires to roll at the same time, so as to avoid slipping.	○
Tractor tire (herringbone type)	Used for compaction of soft and slippery earthwork subgrade Stronger grip for better driving force of tires	○
Standard buoyancy tire (quincunx type)	Commonly used for compaction of cement stabilized macadam and sandy land Small tire indentation and large contact area with the ground.	●
Thickened buoyancy tire (quincunx type)	Deep pattern, more skid-resistant and wear-resistant	○
Electronic anti-skid system	Often used for compaction of subgrade on sandy land and with large slope (≥30%) Intelligently adjusting the driving force of drums and tires to avoid slipping	○
Intelligent rolling system	Used for key projects such as expressways and high-speed railways (with strict density requirements) Visually display compactness changes in real time through light display	○
Reversing camera	Display real-time images at the rear of cab Integrate images into the display screen of cab	○
Manual release of parking brake	Emergency: When the engine cannot be started, it is urgent to drag the machine away from the site. Press the button manually to release the reducer and rear axle brake, so as to facilitate the dragging of the machine	○

●Standard ○Optional

